

# HyPURGel™

Designed For Cool And Comfort Through Chemistry

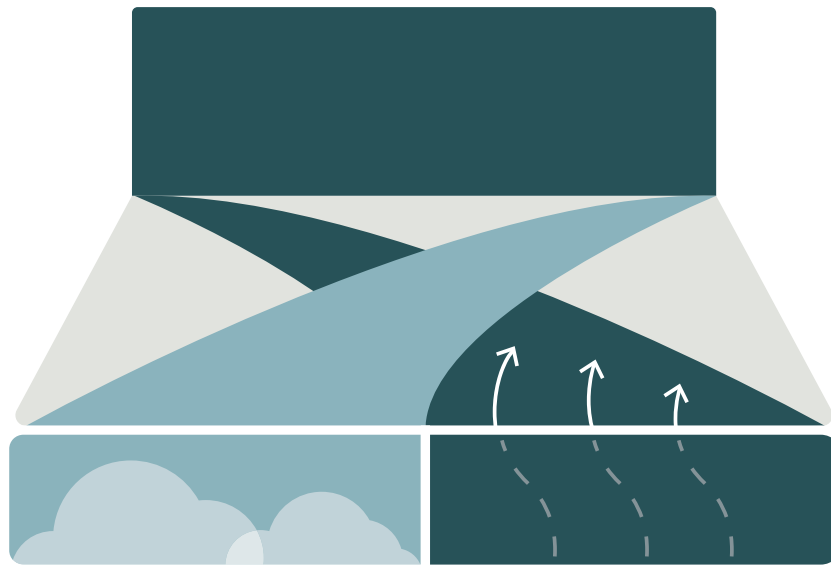


Where Comfort Meets Innovation

# Adapts To Your Body & Cools As You Sleep.

HyPURGel™ offers superior comfort and cooling. It starts with a soft, plush feel, and deep comforting support that adapts to your body as you sleep. With HyPURGel™, your body will feel bouyant, like it's floating in air. HyPURGel™ eliminates the bottoming out sensation of traditional memory foam mattresses. No matter how soft your bed is, it needs to be cool to be comfortable. HyPURGel's™ chemistry does just that. It is designed with unique cooling gels that help cool your body while you sleep. HyPURGel™ also allows airflow with a special cell structure, this feature allows at least 2 times the airflow of traditional memory foams.

For a cool and comfortable night's sleep, HyPURGel™ has the right chemistry to help you sleep soundly all night.



## PEAK COMFORT

HyPURGel™ is plush and adaptive to your sleep position for amazing comfort.

## COOLER THROUGH CHEMISTRY

A cooler night's sleep starts with HyPURGel™ due to superior airflow compared to traditional memory foams.

## DESIGNED FOR SCALE

HyPURGel™ is designed with scale in mind. It's a premium grade foam manufactured efficiently.

## SUPERIOR SUPPORT

HyPURGel™ offers deep support to match your body type.



Where Comfort Meets Innovation

INFO@FUTUREFOAM.COM



# HyPURGel™

## Features & Benefits



### SUPPORT

HyPURGel™ is a unique latex-like foam, with gel that immediately responds and moves with your body. HyPURGel™ eliminates the bottoming out feeling of traditional memory foam and replaces it with a floating sensation for invigorating comfort all night long.



### TECHNOLOGY

HyPURGel™ uses a gel infusion for superior cooling. It was also designed with cell structure that allows airflow. In fact, it has at least 2 times the airflow of traditional memory foam.



### SPECIFICATIONS

Color: Various Colors

Density (lbs./Cu. Ft.): 3.0 +/- 0.30

IFD @25% (lbs. / 50 sq. in.) :

5 Available Grades: 8, 12, 15, 18 & 21

Elongation: > 100%

Tear Resistance (lbs/sq. in.): >0.8

Tensile Strength (lbs/sq. in): > 8.0

Compression Set (@90% comp.): < 10%

Hysteresis Loss: < 12%

Air Flow: > 5

Tg: 60°F



# Our Sustainability Promise

Future Foam is committed to reducing the impact on our environment. Helping the environment is ingrained in our culture and how we do business, and is reflected in the products we innovate.



## 310 LBS/MIN DIVERTED

We've recycled over 2 billion  
lbs. of post industrial foam  
scrap since 2011.



## GROWING LINE OF SUSTAINABLE PRODUCTS

Our team of chemists are  
constantly working on  
sustainable foam products  
for the future.

SCAN TO  
LEARN MORE



Where Comfort Meets Innovation

EMAIL: [CONTACT@FUTUREFOAM.COM](mailto:CONTACT@FUTUREFOAM.COM)

PHONE: (712) 323-9122

WEBSITE: [FUTUREFOAM.COM](http://FUTUREFOAM.COM)